

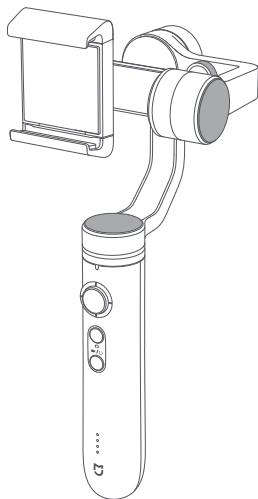
Mi Smartphone Gimbal Manual

Please read the manual carefully before using the product.

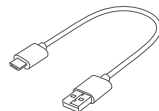


1. Product Introduction

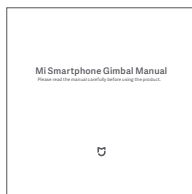
Product accessories list



Mi Smartphone Gimbal x1

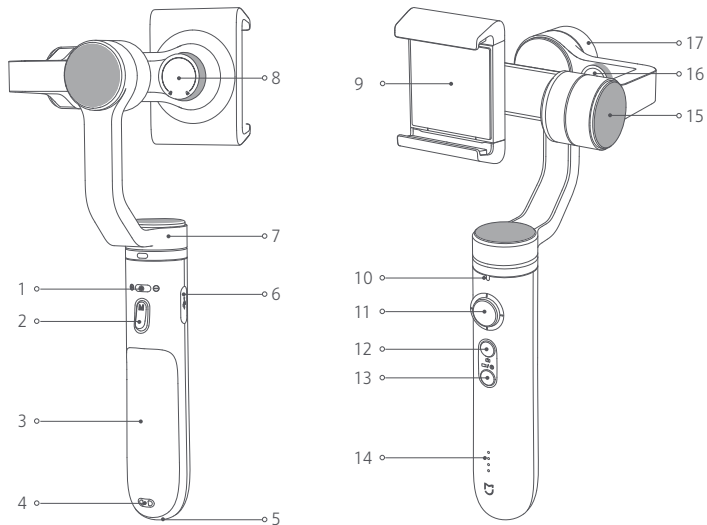


USB charging cable x1



Manual x1

Product components



1. Toggle key
2. Trigger key
3. Anti-skid film
4. Lanyard hole
5. 1/4 inch threaded hole
6. Charging interface

7. Direction axis
8. Fixing knob of phone holder
9. Phone holder
10. Status indicator light
11. Four-direction rocker
12. Photo-taking button

13. Power + Video button
14. Battery indicator light
15. Pitch axis
16. Phone balance adjustment knob
17. Roll axis

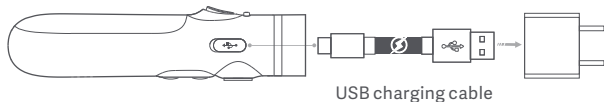
2. Download and install Mi Smartphone Gimbal APP

Please scan the QR code below to download and install Mi Smartphone Gimbal APP. The product can only be used by connected to Mi Smartphone Gimbal APP, can not connect to the phone camera.



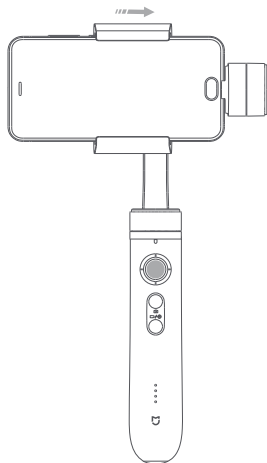
3. Charging

1. Please use the equipped USB charging cable of the product to charge through the power adapter, mobile power or PC.
2. Recommended to turn off before charging. Make sure the battery is fully charged before using it for the first time; use a 5 V \leftrightarrow 2 A power adapter, it takes about 4 hours to fully charge the battery.

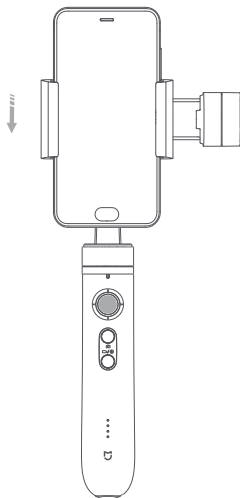


4. Installation and disassembly

1. Before installing the phone, please confirm that the Mi Smartphone Gimbal is turned off; pull the phone holder out, insert the phone into the phone holder, and make sure one side of the phone is attached to the phone bracket (horizontally), or placed in the middle of the phone holder (vertically)
2. Before removing the phone, please confirm that the Mi Smartphone Gimbal is turned off; pull out the phone holder to remove the phone



Horizontally

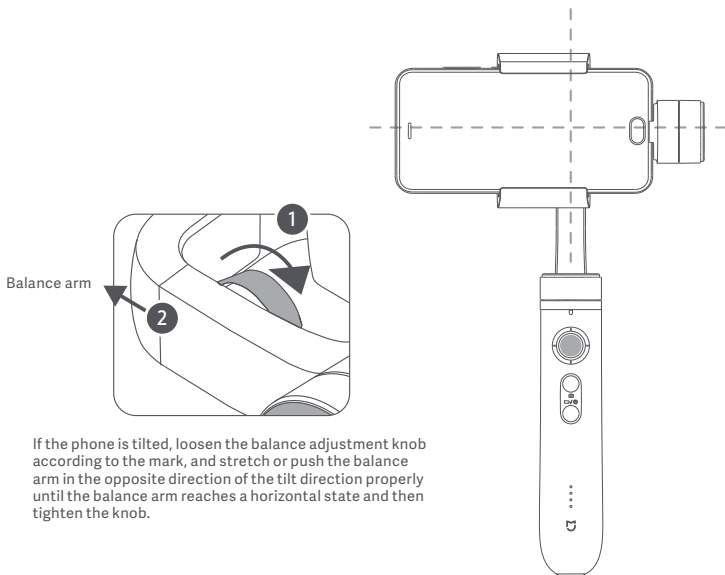


Vertically

Note:

Please rotate the phone holder fixing knob to loose state, and rotate the phone holder clockwise or counterclockwise, to make it horizontal or vertical, after adjustment, please re-rotate the phone holder fixing knob to be tight.

3. Before adjusting the balance, please confirm that the Mi Smartphone Gimbal is turned off; make the Mi Smartphone Gimbal placed horizontally as the picture below, keep the gimbal upright and steady, if the phone can maintain the level independently, representing the balance is appropriate



Note:

1. It is not recommended to turn on the Mi Smartphone Gimbal without installing the phone. If the device is not detected, the Mi Smartphone Gimbal will not work.
2. After installing the phone, please adjust balance in the state that the Mi Smartphone Gimbal is turned off and stable to make the phone maintain level on its own.
3. Before starting the Mi Smartphone Gimbal, please make sure that the balance has been adjusted after the installation of the phone, the phone holder fixing knob and the balance adjusting knob are in locked state, otherwise, the working performance of the gimbal will be affected.

5. Operation guidance

Make sure that the phone is properly connected to the Mi Smartphone Gimbal

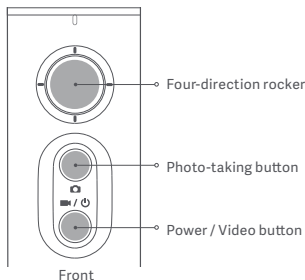
1. Turn on / off

Turn on: press and hold the power and video button until the status indicator light is on

Turn off: press and hold the power and video button until the status indicator light is off

2. Connect the Mi Smartphone Gimbal app

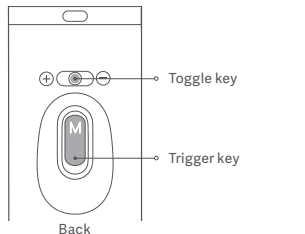
Open the phone Bluetooth, according to the app prompt to connect gimbal, after the connection is successful, you can complete the camera / video and other functions through the gimbal



adjust the phone angle

Short press the photo-taking button, according to the current phone mode to complete the photo shot With the OTG data cable, long press 3 seconds, can charge the external equipment; again long press 3 seconds, can stop charging

Long press to turn on / off the Mi Smartphone Gimbal Short press the power / video button, according to the current phone video mode to start recording, Short press again the power / video button to stop recording



Press left/right for 1 second to unlock the toggle button

Toggle to ⊕ , ZOOM value increases;

Toggle to ⊖ , ZOOM value decreases;

Double-click: gimbal recover to median, cancel current target tracking

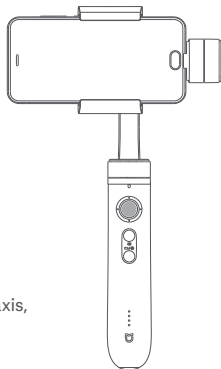
Triple strike: normal shooting and selfie mode switching

Hold: lock the phone camera direction in different modes

Note: In order to prevent touching the button by accident in the process of moving, press down the photo-taking button and trigger key for 3 seconds simultaneously to lock the button, press again for 3 seconds simultaneously to unlock the button.

3.Mi Smartphone Gimbal Working Mode

Vertical mode: when gimbal handle vertical angle is greater than 30°, gimbal will automatically switch to "vertical mode"



Trigger key

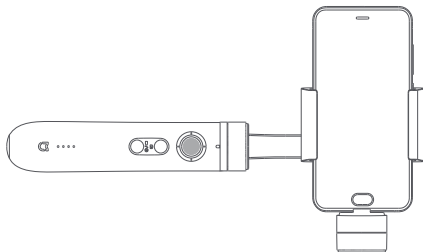
Double-click: gimbal recover to median

Triple strike: normal shooting and selfie mode switching

Hold: lock the phone camera direction

Four-direction rocker: control the gimbal rotation in direction axis, pitch axis

Side shot mode: rotate the Mi Smartphone Gimbal from the vertical mode leftward or rightward, the vertical angle of the handle is less than 30°, gimbal will automatically switch to "Side shot mode"



Trigger key

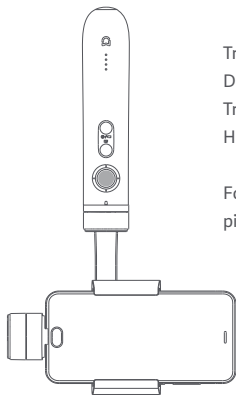
Double-click: gimbal recover to median

Triple strike: normal shooting and selfie mode switching

Hold: lock the phone camera direction

Four-direction rocker: control the gimbal rotation in pitch axis

Inverted mode: when the Mi Smartphone Gimbal upside down 180°, gimbal will automatically switch to "inverted mode"



Trigger key

Double-click: gimbal recover to median

Triple strike: normal shooting and selfie mode switching

Hold: lock the phone camera direction

Four-direction rocker: control the gimbal rotation in direction axis, pitch axis

Flashlight mode: rotate the Mi Smartphone Gimbal from the vertical mode forward or backward, the vertical angle of the handle is less than 30°, gimbal will automatically switch to "flashlight mode"

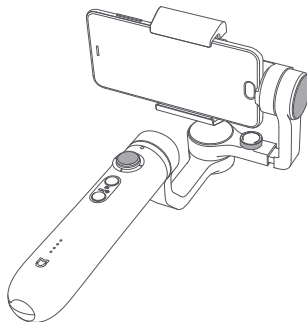
Trigger key

Double-click: gimbal recover to median

Triple strike: normal shooting and selfie mode switching

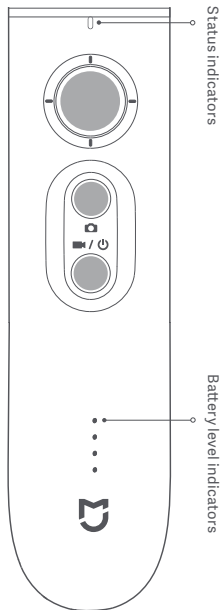
Hold: lock the phone camera direction

Four-direction rocker: control the gimbal rotation in pitch axis



Note: In the process of mode switching, if the gimbal operation is abnormal, you can double-click the trigger key to make gimbal recover to median.

4. Indicators



Indicators	Description
Flash of blue light	Bluetooth not switched on
Solid blue light	Bluetooth has been switched on / update successfully
Alternate flash of red light and blue light	Updating
Solid red light	Abnormal state

Indicators	Description
Lit one by one	Turning on
Going out one by one	Turning off
Flash of indicators	Charging
All indicators go out	Charging completed

Note: When the Mi Smartphone Gimbal is turned off, short press the power / video button to view the current power

6. Precautions

1. Lithium battery capacity will be greatly reduced at low temperature, so please do not use the Mi Smartphone Gimbal below 0 °C
2. Make sure that after the Mi Smartphone Gimbal is turned on, the gimbal rotation is not blocked by external forces.
3. When not in use or at rest, please ensure that the Mi Smartphone Gimbal is turned off.
4. Mi Smartphone Gimbal is a high precision control device, please do not fall or impact by external forces, otherwise may cause damage and work error.

7. Basic specification

Product name: Mi Smartphone Gimbal

Model: : SJYT01FM

size: 103.3 x 116.7 x 288.3mm

Net weight: 476g

Control precision: $\pm 0.03^\circ$

Power: 2.5W

Bluetooth: support 4.0

Battery capacity: 5000mAh

Operating temperature: 0C ~ 40C

Pitch angle range: +35°~ -140°

Direction angle range: 360°

Manufactured for: Xiaomi Communications Co., Ltd.
Manufactured by: Beijing FIMI Technology Co., Ltd.
For further information, please go to www.mi.com/en/
Address: No.348, Floor 3, 1# Complex Building, Yongtaiyuan jia, Qinghe,
Haidian District, Beijing, China

